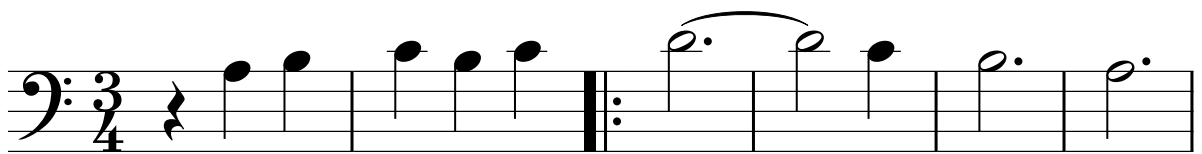


Vals de Amelie

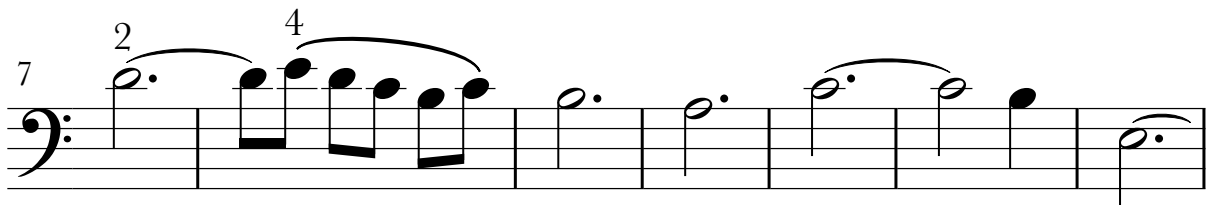
www.maestrodelviolonchelo.com

$\bullet = 178$

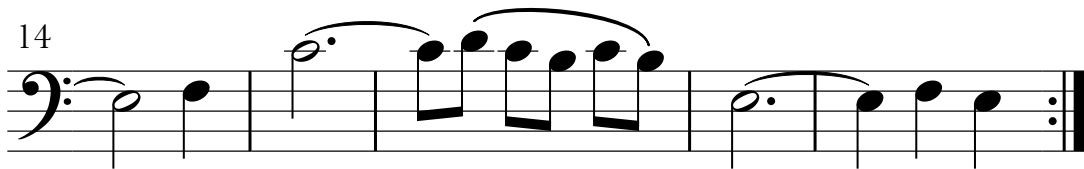
Cello



Cell.



Cell.



Vals de Amelie

voz2

www.maestrodelviolonchelo.com

Cello

$\bullet = 178$

7

Cell.

8

14

Cell.

15

18

Vals de Amelie

voz3

www.maestrodelviolonchelo.com

$\text{♩} = 178$

Cello

6

Cell.

11 1

Cell.

16

Cell.

The image displays a musical score for the piece 'Valse de Amelie' (voz3). It consists of four staves, each labeled 'Cello' or 'Cell.' on the left. The first staff is for the Cello and begins with a tempo marking of a quarter note equal to 178 beats per minute. The music is written in bass clef with a 3/4 time signature. The first staff contains two measures of rests followed by a repeat sign and then a series of eighth and sixteenth notes. The second staff continues the melody with more eighth and sixteenth notes. The third staff includes a first ending bracket over the final two measures. The fourth staff concludes the piece with a double bar line and repeat dots. The notation uses various note values including eighth, sixteenth, and quarter notes, often beamed together in groups.